

# ambassador

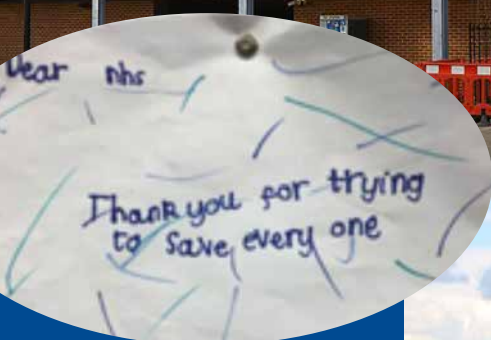
Public and Staff Membership Magazine – June 2021

## Car parking boost for patients, visitors and staff... *(See page 10 for more details)*



Inside this issue

...400 more spaces at L&D Hospital



- Urgent and Emergency Care improvements
- NHS will let you know when your COVID-19 vaccine is ready
- Bedfordshire Hospitals' porter attends NHS thank you reception at Downing Street
- Our incredible volunteers
- You are entitled to discounts
- Diary Date – Annual Members' Meeting 2021



...and  
300 more  
spaces at  
Bedford  
Hospital



# Welcome to ambassador



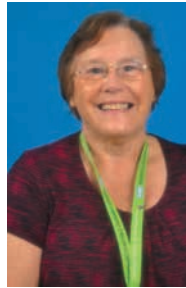
## Contents

- 3 Chair's Message
- 4 Coronavirus vaccination programme
- 5 Our Incredible Volunteers
- 6 Just Another Day for a Surgeon!
- 7 Our Porter attends NHS thank you reception at Downing Street
- 8 International Nurses' Day 2021
- 10 Car parking
- 11 Urgent and Emergency Care improvements
- 12 Main Redevelopment programme
- 13 Service moves
- 13 New Energy Centre
- 13 Captain Sir Tom's Garden
- 14 Fundraising News
- 15 Mount Vernon Cancer Centre Review
- 16 You are entitled to NHS discounts
- 16 Annual Members' Meeting 2021

We hope you enjoy our Membership Magazine. If we have your **name or address incorrect** or the person to whom we have sent this magazine no longer lives at the address mentioned in the address label please let us know by contacting us on the number given at the bottom of this page. If you have already informed the hospital of any changes but we have not updated our *Membership* database please accept our apologies – this is because our Membership database is not linked to the *Patient* database.

*Ambassador* is our way of communicating with you, our Trust members. We want to ensure that we keep you up to date with developments at the Trust and how you can get involved. We now have more than 26,000 members and we are keen for as many of you as possible to play an active role in shaping how the Trust is managed and developed for the future.

*Dear Member,*



Welcome to our first Ambassador of 2021. It is good to begin to get back to a more normal way of working now that Covid 19 pressures are reducing. It has been a very difficult time for us all, not least our clinicians and nursing staff who have worked tirelessly and without question to keep our patients safe. We are forever grateful to them all.

There is a massive redevelopment programme at both hospital sites – you can read about this on pages 10 – 13. The opening of our new multi-storey car park in Lewsey Road, Luton, some of the horrendous previous congestion around the site will have eased.

Construction work at both L&D and Bedford sites will continue for some time, but be assured there will be measures in place to ensure the safety of all patients and visitors and the continuity of 'business as usual'.

Since the merger with Bedford Hospital in April 2020, we are now known as Bedfordshire Hospitals NHS Foundation Trust and of course very keen to recruit more members. To become a member please visit our website <https://www.bedfordshirehospitals.nhs.uk/get-involved/ft-membership/become-a-member/>.

I do hope you enjoy reading your magazine. We look forward to seeing you at the Virtual Annual Members' Meeting in September.

My best wishes to you all,

**Pam Brown**

*Public Governor and Chair of the Membership & Communications Sub Committee*

*If you would like to receive an electronic copy of the Ambassador in the future please send your email address to [FTmembership@ldh.nhs.uk](mailto:FTmembership@ldh.nhs.uk)*

---

### Contact us:

The Foundation Trust **Membership Department**. Tel: 01582 718333 Email: [FTmembership@ldh.nhs.uk](mailto:FTmembership@ldh.nhs.uk)  
**Post:** Membership Dept – Nova House, Luton & Dunstable University Hospital, Lewsey Road, Luton LU4 0DZ  
Governors can be contacted by email at [Governors@ldh.nhs.uk](mailto:Governors@ldh.nhs.uk) or write to the Membership Department as above.

*This publication is produced by the Bedfordshire Hospitals NHS Foundation Trust Membership Department*



# Chair's Message

*Dear Members,*



It has been a very busy year since last I wrote. We have increasingly consolidated the merger of the two hospitals while retaining their local relationships and identities. It is difficult to record fully my, the Board's and Governors' appreciation of the effort and spirit of collaboration

that people have invested in this integration. Now all clinical specialities have one clinical director (medical) lead, general manager and lead nurse operating across both sites.

As you all know, this has been achieved in the most challenging circumstances. When I last wrote we all thought we were recovering from the pandemic whose principal effect had been felt in Luton; and then we all faced the "second wave" whose major impact ended up in Bedford.

The most remarkable contrast, however, between these two experiences has been the incredible "learning" – everyone knows the story of the vaccines and that this country learned to trust and apply the technology ahead of most others. But we also learned the techniques of testing people as they came in and segregating them once in the hospital with the great benefits of containing hospital born infections. Finally, we also learned new treatments often using existing drugs in new combinations and timings. As a result, the peak number we had in hospital beds was significantly lower during the second wave compared to the first. We must not be complacent as new variants may develop but we certainly know we are better prepared to address any future outbreaks of the disease.

The other great impact of the pandemic has to build up pent-up demand as people have been reluctant to access health services. This has two impacts for us - our waiting lists for planned treatments have expanded beyond anything we could have contemplated a year ago – our objective is that by the time you read this no one will be waiting for more than a year for any planned procedure. Clearly, in core services (emergency, cancer and paediatric particularly) we have protected our activity levels and we hope to be much closer to achieving normal targets for delivery of these services by the end of this year. In this context we

are pleased to have been selected as one of the seven trusts nationally to deliver the Government's Accelerator programme - trialling new techniques to achieve levels of activity ahead of those pre-Covid.

Looking to the future also, we are in the final stages of go-ahead of our new Acute Services block on the L&D site; we have opened 300 more car parking spaces at Bedford Hospital and opened 3 new car parks creating 400 more spaces to alleviate the strain as the L&D site is redeveloped. Part of this has been to develop a new travel hub which will facilitate cycling as Sustainability has soared to the top of our agenda. In terms of our medical services, we have received central funding to expand Emergency Departments on both sites; these schemes will complete this year.

We have had no significant general vaccination responsibility but, using our teaching facilities and a lot of support from volunteers, did lead on the vaccination of our staff and other health professionals. I hope that all who read this have either been vaccinated or are planning to be so; unless in very specific circumstances the evidence is clear that you should not, we encourage you to get vaccinated. We urge this for your own health perspective but also to protect our hospitals - the evidence is clear even if they get Covid, those who have been vaccinated have much less severe symptoms and may avoid being hospitalised. A win:win situation.

This can only represent a synopsis of the incredible changes and commitment experienced and displayed in the Bedfordshire Hospitals. Over the last year the staff have given of themselves and their families to a degree which we can only admire for which we are extremely grateful.

Kind Regards

Simon Linnett



# Coronavirus vaccination programme at both hospitals and working in partnership...

The local response to the staff and community Coronavirus vaccination project has been remarkable. The two Hospital sites alone have given over 30,000 vaccines which is credit to the committed teams who have come together to deliver the programmes, often at short notice.



Vaccinating staff at L&D Hospital

The Trust has worked with partner organisations to ensure that vaccine supply was secured, site vaccination centres established and doses available to those who needed it. We followed the advice from the local Joint Committee on Vaccination and Immunisation (JCVI) on the groups that should be prioritised for vaccination.

There have been a number of innovative pilots in Luton and Bedfordshire including the

vaccination of our religious leaders at Luton and Dunstable Hospital to help spread confidence in the programme through our community leaders. In Bedford, the Mosque and Sikh temple have been used as vaccination centres providing assurance to those who were particularly anxious. In addition, Bedfordshire, Luton and Milton Keynes (BLMK) system partners have been able to secure national pilots to vaccinate outside of eligibility criteria to prevent spread through hard to reach groups. This has included vaccinating those who are homeless, the vulnerable such as care home residents and our traveller communities. The most recent pilot agreed with the national team was to vaccinate parents and teachers between the ages of 30 and 39 at the Bedford schools who had outbreaks of COVID in May 2021. The aim being to test whether vaccination can prevent further spread.

The Public Health teams at the Local Authorities have kept us informed of outbreaks and as a Trust we have been able to respond, at pace, to meet the needs of these situations.

Simon Linnet commented

“

*The vaccination programme has demonstrated the strength of the local NHS, coming together as a team with innovation and energy to meet the needs of our community. The Trust has been proud to play its part in responding to the need to vaccinate not only our own staff but those from other priority groups and the wider community*

”



Vaccinating staff at Bedford Hospital

## The NHS will let you know when your COVID-19 vaccine is ready for you.

- Join the millions already vaccinated
- To protect yourself and others
- You need two doses for maximum protection

Every vaccination gives us HOPE





# Our Incredible Volunteers

Our volunteers are here through thick and thin to support patients and staff, relieving the day-to-day pressures of service delivery in a variety of ways. We couldn't do it without them!

At Bedfordshire Hospitals, we are very lucky to have 506 volunteers at present who dedicate so much of their time and energy across the L&D and Bedford Hospital sites.

Many volunteers have played a key role in the pandemic response from assisting with essential tasks at both hospital sites during the multiple lockdowns, helping staff and patients, and supporting the Vaccination teams during the implementation of the Covid-19 vaccine.

“

Volunteering has been by far the most rewarding role I have ever undertaken! The staff I worked with were without exception inspirational, and I enjoyed every moment of my time in the vaccination centre. The vaccination programme at the hospital has now ended, and I look forward to helping out again if I am needed for the booster vaccinations. I currently volunteer with Health and Safety which utilises some of my skills and knowledge from previous roles in my career which I would like to feel adds some value to the Trust, again this involves a lot of contact with staff which I really enjoy. Throughout my time volunteering I have felt valued by all the Hospital staff: they were genuinely pleased to see volunteers returning back into the hospital as restrictions eased. I am sure I will be a volunteer for many years to come.

**STEVE, VACCINATION CENTRE AND HEALTH & SAFETY VOLUNTEER**



“

After completing my degree I was keen to enter a career path within the NHS and started volunteering to gain some experience. I volunteered in the Chest Clinic assisting the Respiratory Physiologist initially, moving on to helping on a busy medical ward. The knowledge I have gained in infection control and medical terminology has really helped me in gaining employment at Bedford Hospital where I now work in the lab doing rapid COVID testing. Insight from the Chest Clinic means I can prioritise tests for people with respiratory conditions who are at greater risk these days – respiratory physiology is something I would love to train in one day thanks to my volunteering.

**KARL, SITE TEAM BIOMEDICAL ASSOCIATE**



“

After moving to Luton, I joined the volunteer team at the L&D hospital and at present, I do one morning a week. Prior to the pandemic, I was supporting pharmacy by delivering medications to the wards and at present I am supporting the reception area greeting patients and visitors and directing them to the correct clinic areas. I feel very proud to be working with an amazing team whom have made me feel so welcome. It is very rewarding to know that I am helping the trust in looking after patients, families and visitors. I have volunteered all my life in various capacities and would like to continue as long as I am able.

**MIKE, VOLUNTEER GUIDE**



“

Living with a medical condition is a challenge, however, the care and support I receive from the staff at the Luton and Dunstable hospital is tremendous. I now volunteer at the hospital to give back to the Trust. I signpost patients and assist the Phlebotomy staff by taking samples to the relevant departments. During my time volunteering, I have had the opportunity to form a friendly, professional working relationship with the staff and helping at the hospital has also led to a paid job as a freelance interpreter. Both volunteering and interpreting works well around my day job as a teacher.

**NEETA, PHLEBOTOMY OUTPATIENTS VOLUNTEER**



If you're interested in finding out more about volunteering at either of our hospitals, you can visit <https://www.bedfordshirehospitals.nhs.uk/charity/get-involved/volunteering/>

**Bedford Hospital:** [voluntary.services@bedfordhospital.nhs.uk](mailto:voluntary.services@bedfordhospital.nhs.uk) | 01234 792213  
**Luton and Dunstable University Hospital:** [voluntaryservices@ldh.nhs.uk](mailto:voluntaryservices@ldh.nhs.uk) | 01582 497384

# Just Another Day for a Surgeon!



By Mr D Ravichandran – Consultant Surgeon, Breast and Endocrine Surgery & Clinical Director



As I sit down to start writing this article, I have just finished my first operation of the day which was a parathyroidectomy. Bright sunlight is streaming in from the 5th floor windows outside the surgeons' office in Theatres 1-6. The summer is finally here. I

can just about see a few miles of M1 motorway, where the traffic which was at a snail's pace when I started the list has now quickened as the morning rush finishes. I am pleased I am here, doing what I normally do. Same time last year, the theatre I am operating in today housed a ventilated Covid-19 patient as we did not have enough ITU beds to cope with the demand. I was operating a few miles south, at Spire Hospital in Harpenden but we were doing mainly urgent cases such as cancers. Our theatre team was looking after covid patients so was Dr Matt, our anaesthetist.

We are all pleased to be getting back to do what we do best. The crisis is over for L&D and the focus is on catch up now.

Getting back to the first patient today, Parathyroid is a tiny gland, most of us have four of them in our neck but have never heard of them, although most have heard of its big brother, the thyroid. Parathyroid is a relatively recent addition to human anatomy, having been first described in 1852 in an Indian rhinoceros by Sir Richard Owen, a clever but controversial doctor – scientist who dissected all animals that died in London zoo.

When one or more of these glands become overactive it causes the blood calcium levels to rise. The patient I operated on today initially came to the hospital with pain from a kidney stone, caused by the high calcium and then passed on to me for surgery. The surgery went well and was quick; he should be able to go home in a few hours.

I started the day at about 7.45am in the hospital arrivals lounge seeing the patients for my all-day operating list. Although the day started at 7.45am, the work for the operating list was mostly done on Monday when I went through all the details

of the patients on my theatre list today. That way I avoid any last-minute problems as I check all investigations to make sure we are ready to go. As a result, last minute cancellations are extremely rare.

“

*I have my entire team in the Theatre today so it should prove to be a good day. I have my usual anaesthetist... who, after all these years of working with me is still nice to me despite the fact I have kept her away from her cat, horse and concert rehearsals* ”

The next patient that I am going to operate on is a lady with breast cancer. I am a general surgeon with two sub-specialty interests, endocrine (thyroid and parathyroid) surgery and breast surgery. This is my 30th year in the NHS and 18th year as a consultant at L&D so I am an old hand at this. The patient's breast cancer was discovered by breast screening. Most of you will have seen the breast screening centre near to the hospital further down on Lewsey Road, but may not have realised that this humble building hosts the largest breast screening centre in the country. The cancers found by screening are often too small for the surgeon to feel, so this patient was in the breast screening centre last week having a clip inserted into the cancer under a local anaesthetic to help us find it today. These small screen-detected cancers used to be localised with metal wires. This clip, which is an advanced miniature radiofrequency tag (very futuristic!) is put into the cancer by the radiologist and I will be using a radiofrequency - detection probe to find it during the operation, removing it with the cancer. It is a new method we have just started using, one of the first surgical team in the country to trial it. It is much more humane for the patient than wires and it is working well in our hands. We are quite excited with this new development.

I have my entire team in the Theatre today so it should prove to be a good day. I have my usual anaesthetist Dr Corinna Matt, who, after all these years of working with me is still nice to me despite the fact I have kept her away from her cat, horse and concert rehearsals numerous times over the years by our theatre list running late. I have

Deepak our associate specialist as well as Eloisa, our theatre sister who has been with me almost as long as I have been a consultant. We all share the same work ethic and dedication; a surgeon on his own is pretty useless without a crew.

A little later today I need to go downstairs and see a patient planned for surgery in the afternoon: another lady with breast cancer who had completed her chemotherapy and during the course of this illness found to be positive for a gene (BRCA2) that makes women (and men) more prone to get breast cancer. Because of this she will be having bilateral mastectomies, to reduce the risk of getting another cancer on the opposite side. We will do reconstructions of both breasts at the same time, so she will wake up with “new” breasts. I will be using implants and a special Titanium-coated mesh in the reconstruction. We do a lot of immediate reconstructions of the breasts nowadays (i.e., reconstruction at the same time as a mastectomy). We also do more gene-testing in women with breast cancer.

I will be discussing all the breast cancer patients having surgery today in our multidisciplinary meeting next week jointly with my radiology, pathology and oncology colleagues. Such rapid turnaround time is possible because of the dedicated histopathology support we have in this hospital. I will then see each patient with the results and decisions about further treatment. These are anxious and worrying time for the ladies, and there is always a breast care nurse with me who will be supporting the patient through the cancer journey. Looking after breast cancer patients is a large team effort.

Oh! The theatre sister has just shown up with a stern look on her face, which means “where are you, the next patient is ready”. As I leave the computer to start the surgery, I hope the list today will finish on time and as usual we could head down to the social club (re-opened recently after a long covid-shut down) for some refreshments before going home with the satisfaction of another day well spent.

## Bedfordshire Hospitals’ porter attends NHS thank you reception at Downing Street



An official reception was held at

No. 10 Downing Street on Monday 24 May by Prime Minister Boris Johnson to thank NHS staff for their efforts throughout the COVID-19 pandemic response.



Each Trust were asked to nominate colleagues from their organisation to attend the special reception. Ravi Mahay a Chargehand Porter (as well as a Peer 2 Peer Listener and Freedom to Speak Up Champion) from Bedfordshire Hospitals was one of the select few chosen to attend.

This was a once in a lifetime opportunity for Ravi. He said, “I would like to say thank you to my colleagues for nominating me to attend. I never thought getting to meet the Prime Minister would be on my agenda for 2021! It goes to show that persistence does pay off and someone does acknowledge the hard work I have been doing.”

The Trust was extremely proud to find out that a member of the Trust had been chosen to attend such a prestigious event.

Kevan Hughes, Site Services & Security Manager speaks on behalf of the Trust, “Ravi and his fellow porters have worked tirelessly throughout the pandemic. He has always gone that extra mile to be there to give help and support to his colleagues and our patients throughout these challenging times.

Kevan continues, “For Ravi to be nominated by the Trust for his involvement in the COVID-19 response was a well-deserved honour for him and then to be selected to attend was not only a further honour for him, but to his colleagues and Bedfordshire Hospitals as a whole.”



# International Nurses' Day 2021

**Nurses' Day was celebrated on Wednesday 12 May, with a day full of activities and fun!**

This included a virtual celebration event where we reflected on the challenges of the last year, held a wellbeing session on resilience, introduced the new ACE programme for our Healthcare Assistants, reviewed our Pathway to Excellence accreditation and launched the DAISY awards.





With thanks to Bedfordshire Hospitals NHS Charity and Bedford Hospital Charity and Friends, hampers, cakes, samosas and ice creams were distributed on the day.

On the Bedford Hospital site, we were delighted to welcome Catherine Morgan, Chief Nurse for the East of England, who visited our wards and spoke to staff about the incredible work they do every day.

Despite the limitations due to COVID, the day was well received by staff on both hospital sites.







# Redevelopment Update

## Car parking boost for patients, visitors and staff!

### Bedford Hospital

Work to improve car parking at both hospital sites progressed at pace.

The Britannia Road staff and patient car park at Bedford Hospital now has an additional 337 spaces, as well as CCTV and new electric car charging facilities.



Cars parked in the new car park at Bedford Hospital



Disabled parking at Bedford Hospital



Electric charging points in the new car park at Bedford Hospital



The ramp to the new car park at Bedford Hospital

### Luton and Dunstable University Hospital (L&D)

A new multi-storey patient and visitor car park has also opened at the L&D Hospital on Lewsey Road.

The new four-level car park provides 278 patient and visitor car parking spaces and has been designed to improve the flow of cars, reducing queuing and congestion along Lewsey Road.

Staff and visitor cycling facilities are also available, including 40 cycling spaces for patients and over 200 for staff, as well as staff changing and shower amenities.

In addition to the patient and visitor car park, two new staff car parks have been created on Dunstable Road, providing a further 250 car parking spaces for staff.

The additional car parking spaces on both sites have certainly been welcomed by staff, patients, visitors and local residents.



Cycling facilities at the L&D Hospital



Multi-storey car park at the L&D Hospital



Staff parking close to the L&D Hospital



## Urgent and Emergency Care improvements

The Trust secured £23m of funding to strengthen Urgent and Emergency Care provision across both hospital sites, in response to the Covid-19 pandemic.



Extension building at the Bedford Hospital ED department

### Bedford Hospital

The first phase of the upgrade at Bedford Hospital was completed at the end of December 2020 and involved the refurbishment of Victoria Ward, to provide additional Same Day Emergency Care (SDEC) beds, to support capacity and flow for emergency patients.

The second phase of work saw the creation of a secure and dedicated Paediatric Emergency Department, and additional capacity for patients. The final phase due to complete in June 2021, will see the opening of a new large waiting and triage area for emergency patients, supporting social distancing.

Work to include provision of CT in the Emergency Department will commence towards the end of June 2021. The Trust is hugely thankful to Bedford Hospital Charity and Friends and Bedfordshire Hospitals NHS Charity, for supporting this scheme.

### Luton and Dunstable University Hospital

The upgrade at the L&D Hospital will provide an expanded and refurbished ED with increased capacity, a new and fully segregated Paediatric Department, additional waiting room capacity, and mental health assessment rooms. Furthermore, a CT scanner situated within the department will offer rapid access to diagnostics and subsequent treatment, thereby improving patient outcomes.

Enabling work to begin the upgrade at the L&D has begun, with the relocation of services near the main entrance and construction work started.



External artist impression shot of the ED department after work is complete



External artist impression shot of the ED department after work is complete

WH Smith and The Baguette Company in main reception have now closed, however, staff, patients and visitors still have access to other retail and catering facilities on-site. This includes our newly refurbished restaurant, WH Smith in the surgical block, the Charity shop in Maternity, as well as a coffee van on the service road.

The main patient drop-off point on Lewsey Road has moved north, and can be found outside the Microbiology building. Visitors to the site are urged to drop off in the dedicated zone. Our Security team, in partnership with our construction team, Willmott Dixon, are working hard to ensure staff, patients and visitors are safe while construction work is underway.

The temporary main reception, PALS and security office can be found at the front of the hospital site.

This project is due to complete towards the end of 2022.

This is a hugely complicated and challenging project that relies on working in and around busy environments. Your patience and understanding is appreciated during this time.



## Main Redevelopment programme at the L&D



Nova House office block

Work to transform the hospital continues at pace, with new clinical buildings due to go up at the beginning of 2022 and complete at the end of 2024. This programme includes the creation of an Acute Services Block and New Ward Block which are essential to support Maternity, Neonatology, Critical Care and Theatre services.

The first major step is to clear the site of the old buildings which no longer provide efficient and conducive space. Visitors to the site will start to notice the demolition of Trust Offices which commenced in April.

To support this scheme, we recently opened to the doors of Nova House – our new office block – welcoming around 400 staff.



Inside Nova House, outside meeting rooms



The Trust continues to support agile working and the new building has provided an environment for increased collaboration, whilst making more efficient use of space.

An artist impression of the site at the end of 2024 can be seen below.



Birds eye view of an artist impression of the L&D hospital site in 2024



## Service moves at the L&D

In order to support the main redevelopment project and the Urgent and Emergency Care Scheme, Bariatric (Obesity) and Rheumatology services at the L&D have moved to an off-site outpatient centre – Zone T – a short distance away from the hospital (located within the Travelodge on Dunstable Road).



External shot of Zone T Outpatients entrance



Inside Zone T Outpatients, in the corridor of clinic rooms

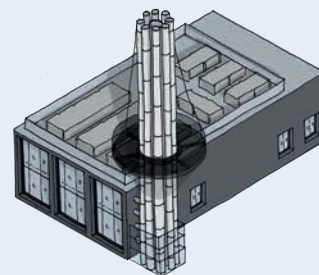


Inside a clinic room in Zone T Outpatients

This is an exciting step for the Trust as the additional outpatient facilities will not only support our services to continue providing specialist care in the best environment, but allow us to progress on our vision to re build the hospital.

## New Energy Centre at the L&D

The energy centre which started on site last year will make the L&D one of the most environmentally friendly hospitals in the country. The Energy Centre will deliver a substantial reduction in energy consumption across the site, and delivers increased resilience. This project is due to complete in December 2023.



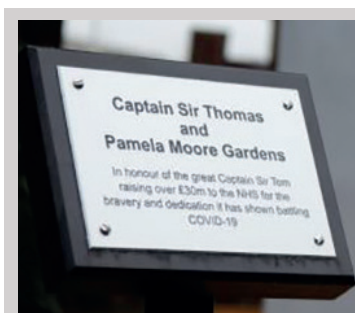
## Captain Sir Tom's Garden at Bedford Hospital

To commemorate Captain Sir Tom Moore's fundraising efforts of walking 100 laps of his garden to raise money for the NHS back in March 2020, the new landscaped garden at Bedford Hospital has been named after the inspirational Captain.

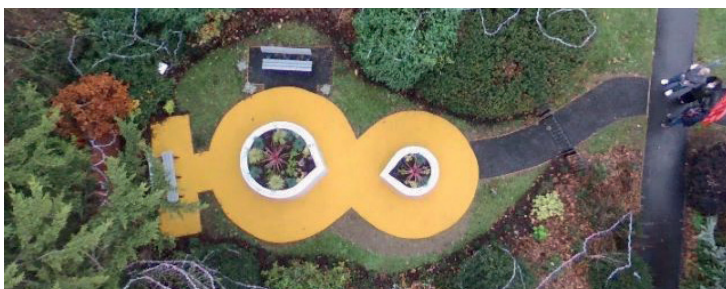
The refurbished area, officially named the Captain Sir Thomas and Pamela Moore Gardens, is located outside the main entrance on Kempston Road.

The garden has been transformed into a new calming space for patients and staff that includes resting areas, sensory plants and a walkway in the shape of the number 100.

A number of staff were involved in this development and spent time outside of work, planting the flowers.



Plaque of Captain Sir Thomas and Pamela Moore Gardens within the garden at Bedford.



Birds eye view shot of the Captain Sir Tom's Gardens



Flowers and benches inside the Captain Sir Tom's Gardens

# Fundraising News

## Because of you...



At the start of the pandemic in 2020, we were overwhelmed by the care and compassion we received from our community to support our NHS Heroes. Working alongside Bedford Hospital Charity & Friends, we have been able to support our wonderful hospitals with donations of toiletries, hand creams and sweet treats to give staff that all important boost they needed. Donations have even helped fund a clinical psychologist and wonderful wellbeing hubs to aid in staff welfare.

We would also like to say a huge thank you for our recent donations:



- A TV for our Frailty Ward
- iPads for our Dementia ward
- Comfort items for Dementia patients
- Enhanced WIFI provision
- Lunch for staff on Christmas Day
- Christmas & Easter gifts for our Paediatric and Elderly Wards
- Notebooks for staff
- Teddies for Loving Care for A&E
- Gardening items for our Sensory Garden Project
- Toys and sensory items for Paediatrics
- Alexa units for elderly wards
- Gift boxes for ward staff

## Get involved

**Bedford Hospital Charity & Friends** has already launched a £1m campaign for the Bedford site Emergency Department see their website for more information [www.bedfordhospitalcharity.org.uk/](http://www.bedfordhospitalcharity.org.uk/).

The Trust charity, **Bedfordshire Hospitals NHS Charity** is also working on an exciting appeal to support our current upgrade for the L&D site – more information will be available soon on our website [www.bedfordshirehospitals.nhs.uk/charity/](http://www.bedfordshirehospitals.nhs.uk/charity/)



## The NHS Big Tea

July 2021 is the month we celebrate all things NHS. We begin these celebrations with The **NHS Big Tea** on Monday July 5 when at 3pm we will have a national break to reflect on the past months, celebrate each other and take a 5 minute breather.



To support this campaign you can donate £3 at 3pm. You can also hold your own tea party and raise funds for our hospitals. To get involved or donate visit our website or get in touch with a member of the team.

## Foundation Trust Members Offer and you can support our Charity!

The Trust is working to be the best we can be. We invest in our sites, in important research to improve medicine and in state of the art technology to make procedures less invasive and reduce recovery times. We are working on this legacy for you and for future generations to come. Will you join us?

Leaving a gift in your will can shape the future of the hospital for generations to come. Your first consideration when writing your will is your family and friends, then perhaps a charity close to your heart.

**Machins Solicitor**, is offering our Trust members a 10% discount on writing a Will. You can contact Radha Chauhan or Jamiel Zaman on 01582 514 392 or via email [radha.chauhan@machins.co.uk](mailto:radha.chauhan@machins.co.uk) and [jamiel.zaman@machins.co.uk](mailto:jamiel.zaman@machins.co.uk) Please quote NHS10 to receive your 10% discount, offer code started on the 4th May and ends 1st September 2021.

For more information about fundraising for the hospitals, or to get involved, please call the Fundraising Team on 01582 718 289

or email [fundraising@ldh.nhs.uk](mailto:fundraising@ldh.nhs.uk)

[www.bedfordshirehospitals.nhs.uk/charity/](http://www.bedfordshirehospitals.nhs.uk/charity/)

• [www.facebook.co.uk/BedfordshirehospitalsNHSCharity](https://www.facebook.co.uk/BedfordshirehospitalsNHSCharity)

Twitter@BHN\_Charity • Instagram @bhn\_charity

*Bedfordshire Hospitals NHS Charity is a registered charity in England and Wales, no 1058704*

## Mount Vernon Cancer Centre Review

The Mount Vernon Cancer Centre is a standalone cancer centre and primarily serves a population of over 2 million people in Hertfordshire, South Bedfordshire, North West London and Berkshire.

The NHS in the East of England and in North London is working together to review the services at Mount Vernon Cancer Centre. They are working with the staff at Mount Vernon, with other local hospitals and commissioners, and with the local Cancer Alliances to look at how they can best meet the needs of local people, and develop options that will build on the services, research and patient experience the Centre already delivers.

For more information about the review and how to get involved, please visit [www.mvccreview.nhs.uk](http://www.mvccreview.nhs.uk) where you can also find details of patient and public introductory and update events and patient and public work streams. Dates for the next Patient and Public work stream meetings and the Patient Reference Group meeting will be published soon.

### Here's how you can get involved:

There are vacancies for the patient reference group for representatives from Luton, Bedfordshire, Brent, Ealing, Buckinghamshire and Berkshire. Representatives have been nominated via the local Healthwatch organisation and Cancer Alliance, and any patients from one of these areas who are interested in joining, are advised to contact their local Healthwatch organisation.

# You are entitled to NHS discounts – you deserve these deals!!

## HEALTH SERVICE discounts

To shop online using  
Health Service Discounts visit  
[www.healthservicediscounts.com](http://www.healthservicediscounts.com)  
and Join for free by entering:

Your First Name and Surname  
Email address  
New password  
Member Type = Foundation Trust Member  
Job Category = Foundation Member  
Job Role = Foundation Member

For all inquiries relating to  
Health Service Discounts use  
their *Help & advice* button on the web  
to get a response from  
the customer service team.

*Happy shopping*

As a Foundation Trust Member you are entitled to Health Service Discounts. Health Service Discounts is the UK's biggest NHS staff discount website, with a huge range of discounts specifically for Foundation Trust staff and public members.

You can get exclusive offers on everything from fashion, holidays, home appliances, mobiles, TV & broadband, at some of the biggest brands.

**It's completely FREE to join and FREE to use their discounts too!**

**healthservicediscounts**

## Diary Date

*Important  
DATE!*

### Annual Members' Meeting September 2021

**Date:** Wednesday 8 September 2021, 5pm for 5.30pm start, 7pm finish

**Venue:** Held virtually

**RSVP:** To register email at [FTMembership@ldh.nhs.uk](mailto:FTMembership@ldh.nhs.uk) by 13 August 2021

Please note: further instructions will be sent once you have registered, but a valid email address will be required to join the meeting.

Trust members can join the online meeting to find out how Bedford Hospital and Luton and Dunstable University Hospital have been performing over the past year, and learn more about their strategy for the future. If you are a member this is your opportunity to hear from the senior staff from the Trust.

Due to restrictions associated with COVID-19, the Annual Members' Meeting will be held online. The Agenda and Annual Report will be published on the Trust's website a week prior to the meeting.

**If you would like to attend the Members' Annual Meeting please email [FTMembership@ldh.nhs.uk](mailto:FTMembership@ldh.nhs.uk) by 13 August 2021. Those who have registered will receive the joining instructions via email nearer the time.**

(check your junk email box)

★ **Only limited online spaces are available so register early** ★

This magazine is sent by post to Foundation Trust members. However, we only send one copy per household, even if there is more than one Trust member living at the same address. Please help us save on paper and cost by sharing your copy with the Trust members who live at the same address.