



# **Mr Dimpu Bhagawati**

**Spinal services for issues with your  
back**

**Consultant spinal surgeon**

**M.A, MBBS, MSc MRCS**

**FRCS (ortho)**



# How have changed

- 1. Patient centred care**
- 2. Minimise hospital attendances**
- 3. Safer surgery**
- 4. National Standards**



**NHS England**

**Trauma Programme of Care**

**National Low Back and Radicular Pain Pathway 2017**

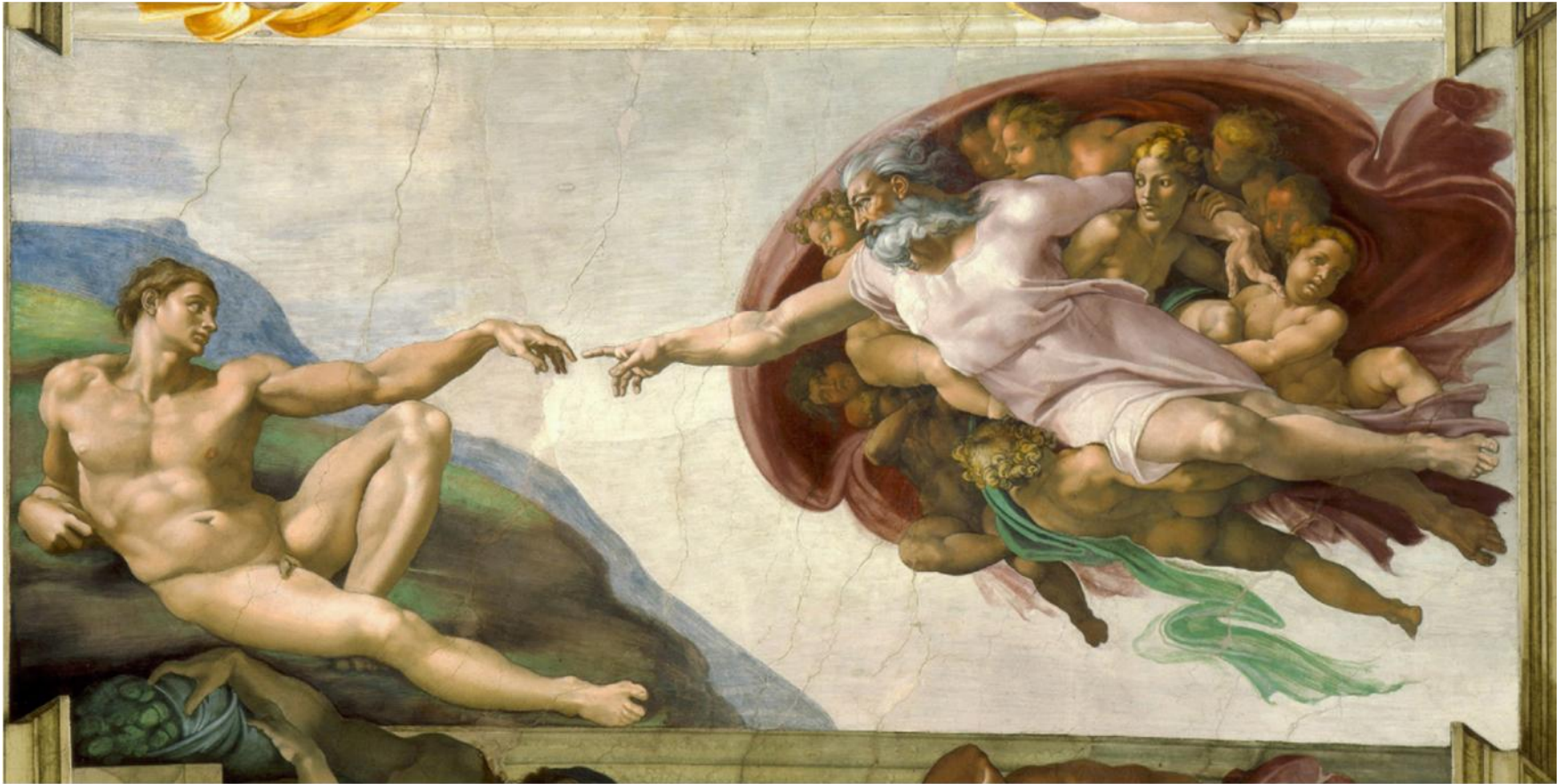
**Together with Implementation Guide**

**Including Implementation of NICE Guidance NG59**

**“Low back pain and sciatica in over 16s: assessment and management 2016”**

**Second Edition Approved by the CRG for Spinal Services**

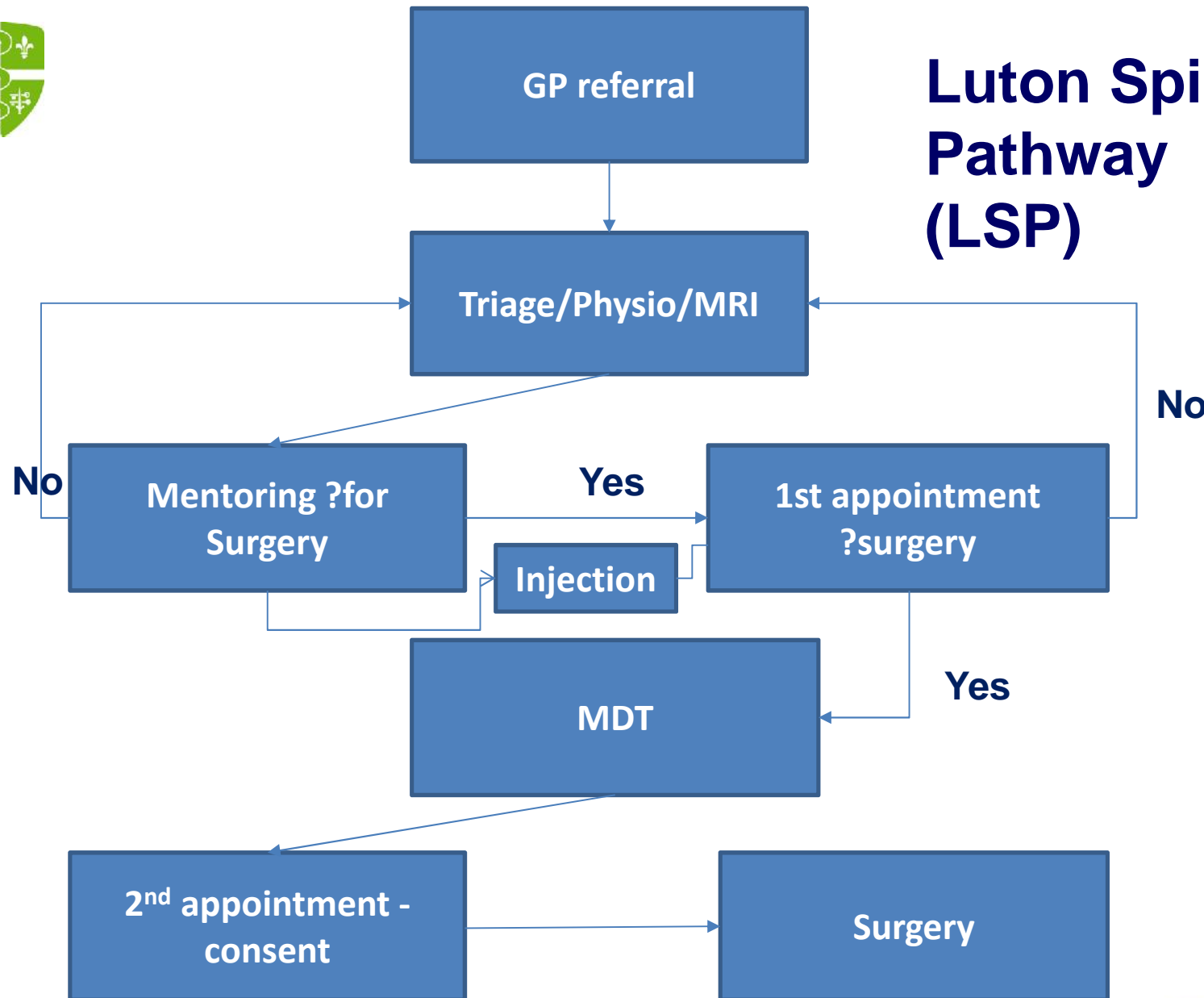
**20 February 2017**



CLINICAL EXCELLENCE, QUALITY & SAFETY



# Luton Spinal Pathway (LSP)





A table for all  
procedures







# Allow us to do surgery more safely - kyphoplasty

---



CLINICAL

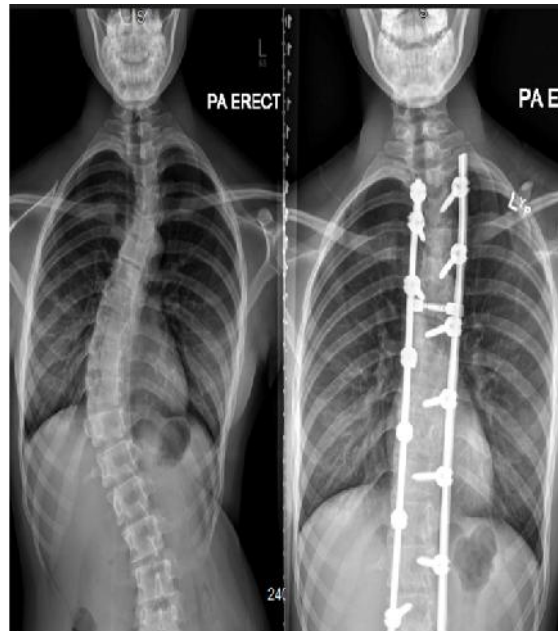


# Safer for staff



CLINICAL EXCELLENCE, QUALITY & SAFETY





# Extending operative range

---

CLINICAL EXCELLENCE, QUALITY & SAFETY



# Thank you